

**COMPRESSED AIR HOUSINGS, COALESCING FILTER ELEMENTS, WATER SEPARATORS & AIR DRYERS!**

**COMPRESSED AIR HOUSINGS**

<b>FILTER MODEL:</b>	<b>PORT SIZE: (inch BSP)</b>	<b>FLOW RATE: (cfm m3/h)</b>		<b>FILTER ELEMENT: ( - grade)</b>
CAH – 0058	½"	58	100	KP0058-P/X/Y/A
CAH – 0088	¾"	88	150	KP0088-P/X/Y/A
CAH – 0117	¾"	117	200	KP0117-P/X/Y/A
CAH – 0147	1"	147	250	KP0147-P/X/Y/A
CAH – 0353	1½"	353	600	KP0353-P/X/Y/A
CAH – 0500	2"	500	851	KP0500-P/X/Y/A
CAH – 0712	2"	712	1210	KP0712-P/X/Y/A
CAH – 0888	2½"	888	1510	KP0888-P/X/Y/A
CAH – 0930	2½"	930	1550	KP0930-P/X/Y/A
CAH – 1065	3"	1065	1810	KP1065-P/X/Y/A
CAH – 1140	3"	1140	1900	KP1140-P/X/Y/A
CAH – 1300	3"	1300	2210	KP1300-P/X/Y/A
CAH – 1380	3"	1380	2300	KP1380-P/X/Y/A

**ADDITIONAL ELEMENTS & SPARES PARTS:**

<b>FILTER ELEMENT: ( - grade)</b>
KP0058-P/X/Y/A
KP0088-P/X/Y/A
KP0117-P/X/Y/A
KP0147-P/X/Y/A
KP0353-P/X/Y/A
KP0500-P/X/Y/A
KP0712-P/X/Y/A
KP0888-P/X/Y/A
KP0930-P/X/Y/A
KP1065-P/X/Y/A
KP1140-P/X/Y/A
KP1300-P/X/Y/A
KP1380-P/X/Y/A

<b>FILTER MODEL:</b>	<b>PORT SIZE: (inch BSP)</b>	<b>FLOW RATE: (cfm m3/h)</b>		<b>FILTER ELEMENT: ( - grade)</b>
CAH – 0058	½"	58	100	KP0058-P/X/Y/A
CAH – 0088	¾"	88	150	KP0088-P/X/Y/A
CAH – 0117	¾"	117	200	KP0117-P/X/Y/A
CAH – 0147	1"	147	250	KP0147-P/X/Y/A
CAH – 0353	1½"	353	600	KP0353-P/X/Y/A
CAH – 0500	2"	500	851	KP0500-P/X/Y/A
CAH – 0712	2"	712	1210	KP0712-P/X/Y/A
CAH – 0888	2½"	888	1510	KP0888-P/X/Y/A
CAH – 0930	2½"	930	1550	KP0930-P/X/Y/A
CAH – 1065	3"	1065	1810	KP1065-P/X/Y/A
CAH – 1140	3"	1140	1900	KP1140-P/X/Y/A
CAH – 1300	3"	1300	2210	KP1300-P/X/Y/A
CAH – 1380	3"	1380	2300	KP1380-P/X/Y/A

## COMPRESSED AIR HOUSINGS - DIMENSIONS & FILTER GRADES

<b>FILTER MODEL:</b>	<b>A: (mm)</b>	<b>B: (mm)</b>	<b>C: (mm)</b>	<b>D: (inch BSP)</b>	<b>E: (mm)</b>	<b>PRESSURE: (BAR)</b>
CAH - 0058	102	257.5	235.5	½"	304.5	20
CAH - 0088	123	302.5	275.5	¾"	349.5	20
CAH - 0117	123	366.5	339.5	¾"	413.5	20
CAH - 0147	123	406.5	379.5	1"	453.3	20
CAH - 0353	123	538	502.5	1½"	585	20
CAH - 0500	160	625.5	584	2"	672.5	20
CAH - 0712	160	695.5	654	2"	742.5	20
CAH - 0888	235	760		2½"	815	16
CAH - 0930	194	730	672	2½"	777	16
CAH - 1065	235	760		3"	815	16
CAH - 1140	194	869.5	812.5	3"	916.5	16
CAH - 1300	235	760		3"	815	16
CAH - 1380	194	924	867	3"	971	16

**NOTE:**

CAH-0930 WILL REPLACE CAH-0888

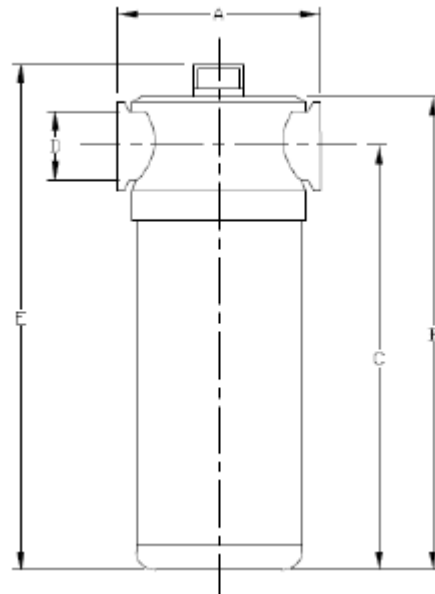
CAH-1140 WILL REPLACE CAH-1065

CAH-1380 WILL REPLACE CAH-1300

**\*\* FILTER ELEMENTS WILL STILL BE AVAILABLE!**

**FILTRATION GRADES:**

GRADE	P Pre-filter	X General Purpose	Y Oil Removal	A Activated Carbon
Filter Efficiency (micron)	5 (micron)	1	0.01	0.01
Max. Oil Carryover (ppm)	5 (ppm)	0.5	0.01	0.001
Element Color	GREEN	BLUE	RED	STAINLESS STEEL



## WATER SEPARATORS

MODEL:	PIPE SIZE: (inch BSP)	FLOW RATE: (cfm m3/h)	
KWSG100BSP	1/2"	58	100
KWSG200BSP	3/4"	117	200
KWSG300BSP	1"	176	300
KWSG600BSP	1 1/2"	353	600
KWSG1200BSP	2"	706	1200
KWSG2200BSP	3"	1294	2200

MODEL	Port	Face to Face	Top – port centre	Total height	Bowl drop height
KWSG100BSP	½	96	20	236	100
KWSG200BSP	¾	117	34	276	160
KWSG300BSP	1	117	34	276	160
KWSG600BSP	1 ½	117	34	276	160
KWSG1200BSP	2	160	64	487	200
KWSG2200BSP	3	230	72	587	200

**CORRECTION FACTOR:**

For maximum flow rate, multiply model flow rate shown in top table, by the Correction Factor corresponding to the working pressure.

Operating Pressure (bar)	1	3	5	7	9	11	13	15	17	20
PSIG	15	44	73	100	131	160	189	218	247	290
Correction Factor	0.5	0.71	0.87	1	1.12	1.22	1.32	1.44	1.57	1.7

**SPECIFICATION:**

Maximum Recommended Operating Temperature	80°C
Minimum Recommended Operating Temperature	1.5°C
Typical Pressure Loss at Rated Flow	50 mbar
Maximum Working Pressure	16 bar

## VACUUM HOUSINGS (BACTERIAL REMOVAL)

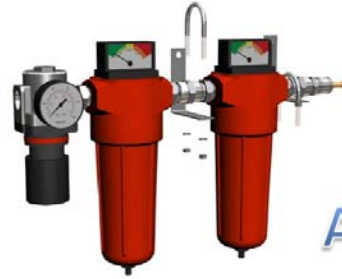
<b>FILTER MODEL:</b>	<b>PORT SIZE: (inch BSP)</b>	<b>FLOW RATE: (cfm m3/h)</b>		<b>FILTER ELEMENT: (- grade)</b>
CAH - 0058MVX	½"	58	100	KP0058MV-PLX
CAH - 0088MVX	¾"	88	150	KP0088MV-PLX
CAH - 0117MVX	¾"	117	200	KP0117MV-PLX
CAH - 0147MVX	1"	147	250	KP0147MV-PLX
CAH - 0353MVX	1½"	353	600	KP0353MV-PLX
CAH - 0500MVX	2"	500	851	KP0500MV-PLX
CAH - 0712MVX	2"	712	1210	KP0712MV-PLX
CAH - 0888MVX	2½"	888	1510	KP0888MV-PLX
CAH - 0930MVX	2½"	930	1550	KP0930MV-PLX
CAH - 1065MVX	3"	1065	1810	KP1065MV-PLX
CAH - 1140MVX	3"	1140	1900	KP1140MV-PLX
CAH - 1300MVX	3"	1300	2210	KP1300MV-PLX
CAH - 1380MVX	3"	1380	2300	KP1380MV-PLX

### ADDITIONAL ELEMENTS & SPARES PARTS:

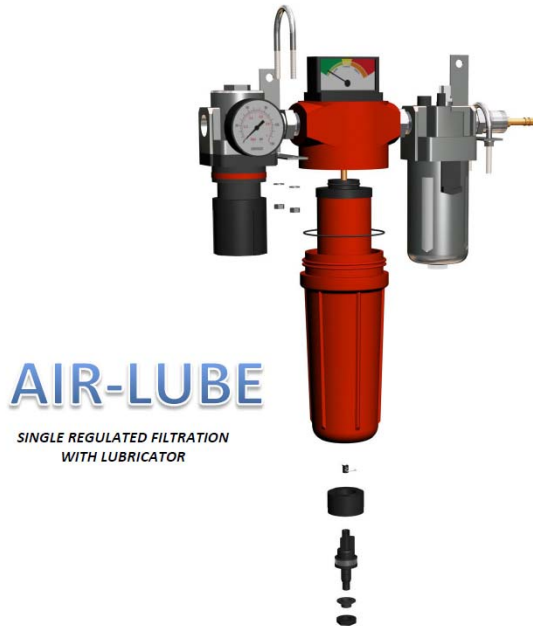
<b>FILTER ELEMENT:</b>
KP0058MV-PLX
KP0088MV-PLX
KP0117MV-PLX
KP0147MV-PLX
KP0353MV-PLX
KP0500MV-PLX
KP0712MV-PLX
KP0888MV-PLX
KP0930MV-PLX
KP1065MV-PLX
KP1140MV-PLX
KP1300MV-PLX
KP1380MV-PLX

<b>SPARE PARTS:</b>
CAH-DI (DIFF. INDICATOR)
CAH-PI (POP UP INDICATOR)
VACUUM FLASK & TAP
VACUUM FLASK

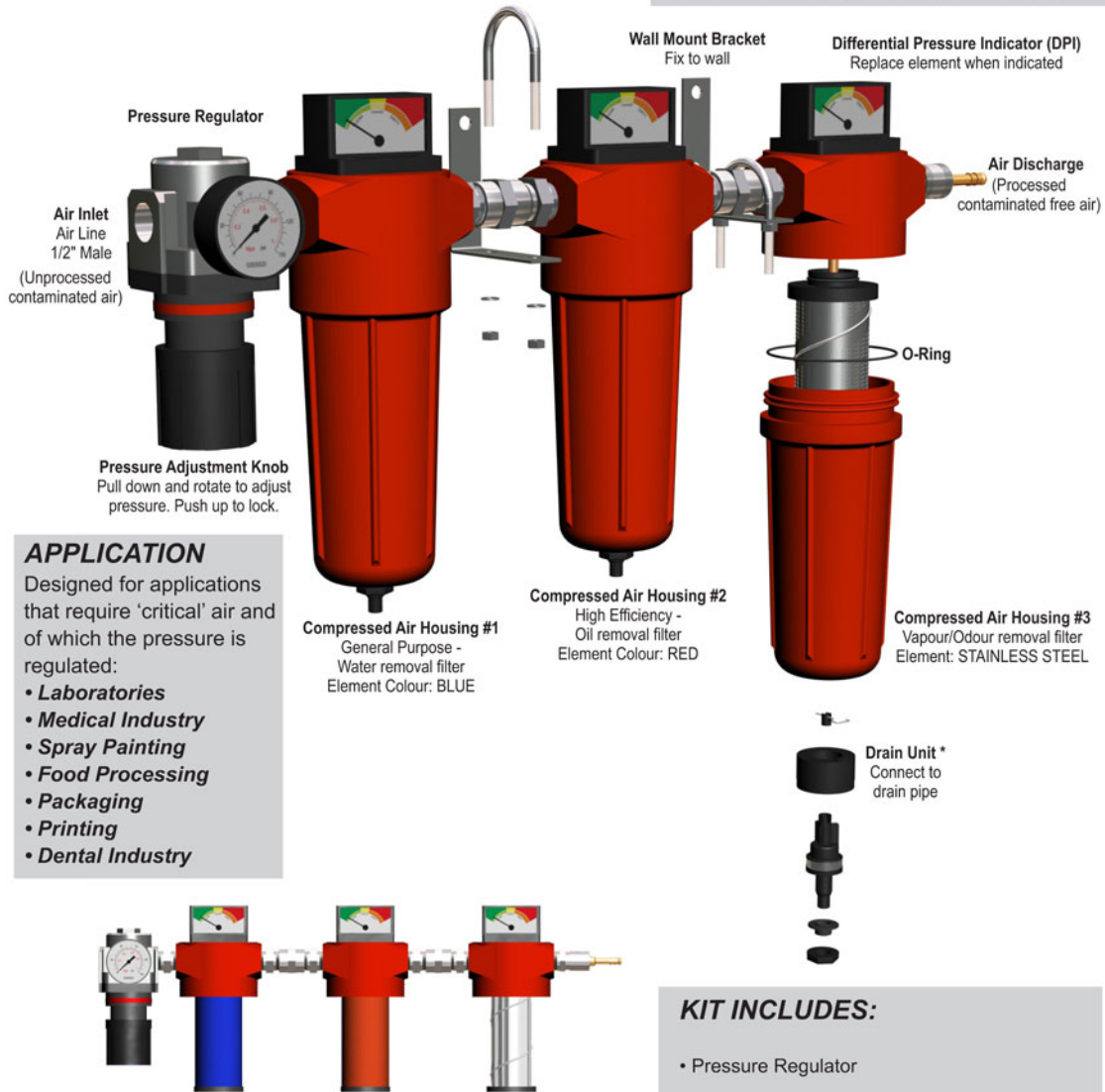
COMBINATION  
FILTRATION UNITS



COMBINATION  
FILTRATION UNITS



## Air ELITE 3 STAGE PRESSURE REGULATED FILTRATION



### APPLICATION

Designed for applications that require 'critical' air and of which the pressure is regulated:

- **Laboratories**
- **Medical Industry**
- **Spray Painting**
- **Food Processing**
- **Packaging**
- **Printing**
- **Dental Industry**

### KIT INCLUDES:

- Pressure Regulator
- 3 Compressed Air Housings - Complete with differential pressure indicators and internal float drains (automatic, non electric)
- 3 Filter Elements - Water removal, Oil removal and Dangerous Vapour/Odour removal filter elements
- All Couplings
- Mounting Brackets
- \* Optional: Digital electronic solenoid drain valve

	General Purpose Water Removal Filter	High Efficiency Oil Removal Filter	Vapour/Odour Removal Filter
Grade	X	Y	A
Filter Efficiency (micron)	1	0.01	0.01
Max. Oil Carryover (ppm)	0.5	0.01	0.001
Element	BLUE	RED	S/STEEL