

Contact details

Engineers - Design office:

Raft Design:
Dries van der Merwe
Cell: +27 (0)83 227 8016 e-mail: dries@pdscivils.co.za
Boela Pieterse
Cell: +27 (0)83 388 0616 e-mail: boela@pdscivils.co.za
Andries van der Merwe
Cell: +27 (0)83 388 0616 e-mail: andries@pdscivils.co.za
Bernard Burger
Cell: +27 (0)82 773 6003 e-mail: bernard@pdscivils.co.za

Structural Design:
Spiros Sdralis
Cell: +27 (0)82 554 1165 e-mail: spiros@pdscivils.co.za

Prashant Bhaga
Cell: +27 (0)82 502 2738 e-mail: prashant@pdscivils.co.za

Glen Magnus
Cell: +27 (0)82 920 8537 e-mail: glenmagnus@pdscivils.co.za

Civil Engineering:
Dries van der Merwe
Cell: +27 (0)83 227 8016 e-mail: dries@pdscivils.co.za

Construction:
Boela Pieterse
Cell: +27 (0)83 388 0616 e-mail: boela@pdscivils.co.za

Project Management:
Dries van der Merwe
Cell: +27 (0)83 227 8016 e-mail: dries@pdscivils.co.za

Financial:
Cor Snel e-mail: cor@pdscivils.co.za

Administration:
Bianca Dekker e-mail: admin@pdscivils.co.za



PREFERRED DESIGN SPECIALISTS (PTY) LTD

- RAFT DESIGN
- STRUCTURAL ENGINEERING
- CIVIL ENGINEERING
- CONSTRUCTION
- PROJECT MANAGEMENT

Physical address:
38A Lynburn Road
Lynnwood Manor, Pretoria

Postal address:
P.O.Box 75419
Lynnwood Ridge, 0040

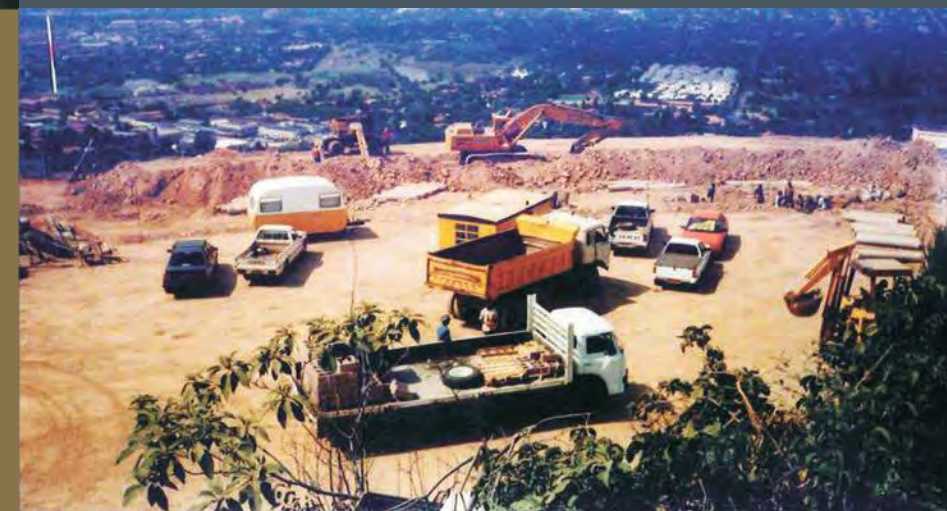
Tel: +27 (0)12 348 7904/7940
Fax: +27 (0)866724316
+27 (0)12 348 8028





Selected projects:

Execujet Hangar,
Forest hill (Faerie Glen),
Hyde Park Units (Johannesburg),
Terenure X33 (Kempton Park),
Montana X83 (Pretoria),
Elwood (Benoni)
Crystal Park (Benoni)
Clearwater Estate Parkhaven (Benoni)
Parys Country Estate - Bridge
Razormart Factory & Offices (Linbro Park)

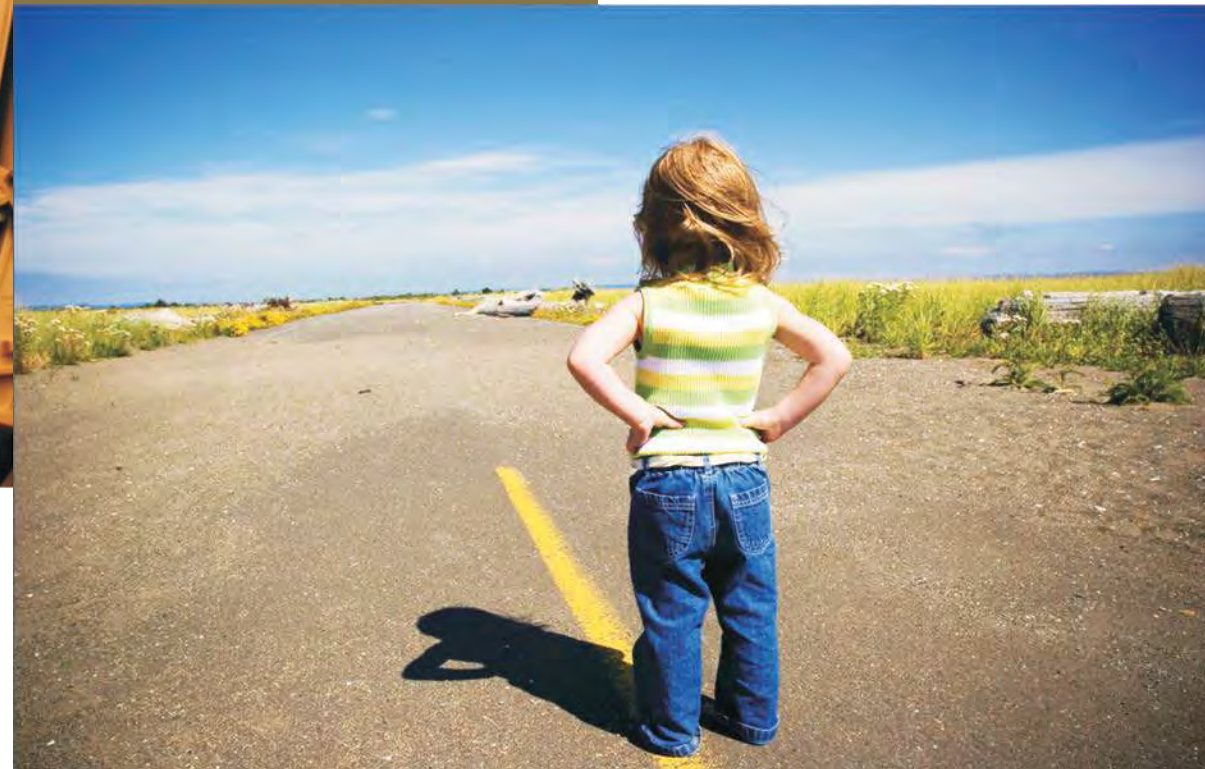


"The road to success is always under construction" - Anonymous



Vision

PDS is committed to upholding and promoting high, professional standards, with an ethical and optimistic approach at all times. We strive for excellence, collaborating with our clients to provide environmentally and economically sustainable solutions with positive outcomes. We encourage creative thinking at all times, keeping abreast of development to supply a broad range of multidisciplinary services by applying professional technical skills and networking with participants in the profession to better serve the needs of all.



CIVIL ENGINEERING

PDS Civil Engineers delivers a design and contract administration service in the following fields: earthwork platforms, sewer, water and storm water reticulation and attenuation dams, sewage purification, reservoirs, pipelines, industrial floor slabs and road systems. Keeping abreast of the latest design technology, construction methods and materials available enables PDS Civil Engineers provide optimum solutions to challenging civil engineering problems.



"Our vision for PDS is to provide an environment for employees and clients alike, where each one can find meaning and purpose in their lives in order to find their true calling. Offering not only a professional service, but also touching the lives of people who cross our paths, not looking for clients that will serve us but looking for clients whom we can serve. At all times operating in an ethical manner, treating others with respect and proclaiming to all, the importance of building their future on a strong foundation."
Spiros Sdralis – Director

"Personal leadership is the process of keeping your vision and values before you and aligning your life to be congruent with them." - Stephen Covey

Selected Projects



Executjet Hanger-Lanseria



RMD Head Office-Centurion

RMD Head Office – Brakfontein Centurion

The structure comprises steel framed open plan warehouse areas of 1500m² and RC framed office buildings of 950m². RMD are a formwork specialist company and one of the requirements was to show off the structural elements of the building. The Architect incorporated 9m high off-shutter concrete shear walls as part of the aesthetics of the building.



Clearwater Clubhouse - Benoni

Clearwater Clubhouse – Benoni

The structure comprises a portal frame steel roof structure supported on a reinforced concrete sub-structure and is founded on a piled raft foundation. PDS were responsible for all structural elements of this project.



RMD Head Office-Centurion



Selected Projects

*"Strive for perfection in everything you do.
Take the best that exists and make it better.
When it does not exist, design it"*
Sir Henry Royce



Parys Golf Estate - Bridge

Parys Bridge

Structural Steel Bridge spanning over the Vaal river. The bridge links Parys Feastive Grounds with a new Gholf estate which is situated on an Island adjacent to the river.

The Bridge comprises 3 segments of 13m lengths which were manufactured off site. The three segments were then assembled on site and the assembled steel frame was placed in position with a 500t mobile crane.

Coordination was key and the launch was successfully executed in January 2007.



Residence Tucker – Birdwood Estate

The building comprises 2000m² of residential space over 4 storeys. This luxury dwelling overlooks Hartbeespoort Dam.

The structure comprises a Reinforced Concrete Frame and in-situ cast slabs. The balcony on the first floor cantilever's 5m towards the dam.



Residence Tucker - Birdwood

Profile

The company Preferred Design Specialists Architects and Engineers (Pty) Ltd was founded in 1992 with the purpose of delivering a multidisciplinary service in the Architectural as well as Civil and Structural Consulting Engineering fields. In 2000 it was decided to split the two disciplines.

Preferred Design Specialists (Pty) Ltd (Civil Engineering) T/A PDS Civil Engineers was subsequently established in 2000 to provide a service in Civil and Structural Engineering as well as Project Management and Construction.

Resulting from the growing demand for raft and slab construction services Preferred Design Specialists (Pty) Ltd (Construction) was established in 2004 alongside PDS Civil Engineers.

PDS has always been committed to keep abreast of new development in the various disciplines, constantly doing research and applying the latest design programmes, to ensure optimum designs which provide high quality solutions to engineering challenges, thereby demonstrating pride in our company and the work we produce.



RSC Rebar Yard Watloo



Selected Projects

Alert Steel

New rebar facilities for Alert Steel in Waltloo, Pretoria comprising 9000m² steel structure with 2 No. 10t crane beams per bay.

Existing warehouse was retrofitted to accommodate crane beams. PDS were appointed as specialist structural steel and foundation engineers for this project.



Alert Steel - Watloo



Auto Extreme - Silverton

Auto Extreme

Structural steel car showroom for Auto Extreme in Silverton, Pretoria comprising 2500m² under roof showroom and offices.

PDS were appointed as structural and civil engineers for this project.



Razormat Factory and Offices - Conceptual Model 30 000m²

Razormat

New cigarette factory for Razormart in Linbro Park comprising 30 000m² of factory and warehouse space and 4000m² of office space.

The factory and warehouse is on 2 levels each 8m high and the office building comprises 5 storeys of office space. The project is currently under construction in 2014.

PDS Civil Engineers were appointed as specialist structural engineers on this project which also includes a double storey car park, 3 storeys of staffing facilities and innovative steel roof



Sable Hills

Sable Hills

Off-shutter concrete framed residential dwelling in Sable Hills for Mr Nel comprising large open plan areas and 6m cantilever patio space.

PDS Civil Engineers were appointed as specialist Structural Engineers for this innovative project.



Razormat - Piling construction in Progress



Razormat - Piling construction in Progress

Selected Projects



Clearwater Office Park - Phase 1



Clearwater Office Park - Phase 2

Clearwater Office Park

Clearwater Office Park in Parkhaven x 8, Benoni. PDS Civil Engineers were appointed by Krisp Properties for this AAA grade office development.

PDS were appointed as Project Structural Engineers for the entire scheme which currently comprises over 35 000m² of prime commercial property.

PDS implemented innovative designs to facilitate in speeding up construction on these contemporary buildings.



Clearwater Office Park - Phase 1



Clearwater Office Park - Phase 2



Clearwater Clubhouse



Structural Engineering

Our structural design team provides cost effective and sustainable engineering solutions through innovative designs and technological excellence.

The combined use of current architectural and structural design programmes such as Revit and PROKON enables us to optimise our designs by providing integrated solutions to our clients. Working in collaboration with market leaders in construction, the precast concrete industry and with geotechnical engineers we strive to produce economical and sustainable designs.

Through continual professional development we encourage our team to broaden their skill base and stay in touch with the latest developments in our industry. Our team also includes Engineers with international qualifications.

Past projects include the structural design of large industrial steel structures, multi storey reinforced concrete buildings, timber structures, water retaining structures and bridges.



Selected Projects:

STRUCTURAL STEEL DESIGN

Nationwide Hangar (Lanseria), Execujet Hangar (Lanseria), Alert Steel (East Lynne Pretoria), Alert Steel (Brits), RSC Rebar Yard (Polokwane), RSC Rebar Yard Waltloo (Waltloo), RMD Warehouse & Office Development (Centurion), Steel Girder Bridge (Parys Landgoed), Auto Xtreme (Silverton), Clearwater Office Park, Razermart Factory (Limbro Park)

REINFORCED CONCRETE DESIGN

Silverton Forum (Silverton), Melrose Apartment Building, Sanlam Offices (Hatfield), Pecanwood Shopping Centre (Pecanwood), Clearwater Estate Clubhouse (Benoni), Clearwater Office Park (Benoni), Willowbrook Office Park (Krugersdorp). In addition approximately 300,000 m² of upmarket residential structures were designed by PDS by the end of 2008.

"Engineering is a great profession. There is the satisfaction of watching a figment of the imagination emerge, through the aid of science, to a plan on paper. Then it moves to realization in stone or metal or energy. Then it brings homes to men or women. Then it elevates the standard of living and adds to the comforts of life. This is the Engineer's high privilege."
– Herbert Hoover



Project Management

PDS offers a Project Management service with experience in both the commercial and residential market, committed to offering a professional service, with the emphasis on quality, time and financial management.

This discipline was established to give clients the opportunity to use their own preferred contractors, materials and professional teams, allowing them involvement and financial control throughout the duration of the project, ensuring that it conforms to their expectations.

Selected Projects:

- Alert Steel (East Lynne Pretoria),
- Alert Steel (Brits),
- RSC Rebar Yard (Polokwane),
- RSC Rebar Yard (Watloo)
- and Upmarket residential houses.

Alert Steel Head Office



*“Try not to become a man of success
but rather try to become a man of value”
- Albert Einstein*

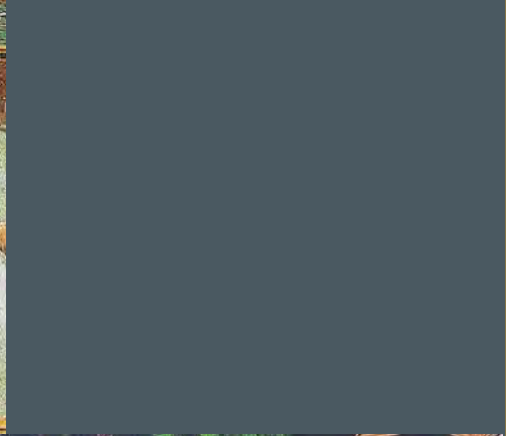


Ethics and Values

PDS is committed to conform to sound values and ethical principles and have therefore joined the Unashamedly Ethical Campaign, accordingly committing to:

1. Be honest and ethical in all our dealings.
2. Provide efficient, economic and effective products in an impartial manner.
3. Provide all stakeholders with timely, accessible and accurate information.
4. Refuse to elicit, accept or pay any bribes, and to report those who do.
5. Negotiate all contracts with the utmost integrity.
6. Pay taxes, and to pay all creditors timeously.
7. Pay reasonable salaries and wages.
8. Submit ourselves to just and ethical governing authorities.
9. Remember the poor by investing generously and sacrificially in the broader community.
10. Collaborate with our peers to impact the community and nation.

“If we are to go forward, we must go back and rediscover those precious values – that all reality hinges on moral foundations and that all reality has spiritual control.” - Martin Luther King



Raft Design

Our raft design team specialises in the design of raft foundations on problematic soils such as clay, collapsible sands, loose fill and dolomite.

Working in close collaboration with PDS Construction and with Geotechnical Engineers, we provide optimal and economical designs to meet the growing demand for economical and sustainable development in South Africa and abroad. Utilising current design software our raft team had produced over 4,000,000 m² of raft designs by the end of 2013.

In addition to conventional and piled rafts our raft design team have produced successful solutions utilising voided rafts, Boucell rafts, rafts with beam extensions as well as soil improvement solutions such as compaction grouting. Raft foundations have also successfully been used to provide cost effective solutions on normal soil conditions.



Silverlakes

Selected Projects

PDS has designed raft foundations and supervised the construction thereof in up market security villages such as Pecanwood, Westlake, Birdwood Estate, Centurion Estate, Southdowns, Midstream, Eagle Canyon, Dainfern, Woodhill, Silver Lakes, Willow Acres, Mooikloof, Cornwall Hill, Irene Farm Villages, Eco Park and Cashan as well as various M&T residential developments.

The Company has also been involved with numerous low cost housing projects in Gauteng, North West Province, Free State, Mmpumalanga and Limpopo Province. Specialised designs have also been done for large commercial developments such as Waterfall Mall in Rustenburg and Golden Walk Mall in Germiston.



"Engineering is the professional art of applying science to the optimum conversion of natural resources to the benefit of man"
Ralph J. Smith

Construction

PDS Construction was established to fulfil the growing need, in the commercial and residential housing market, of clients requiring a one stop design and construct turnkey service. The company is committed to establish and define the particular requirements of the client to find the optimum solution.

As the motto of PDS construction is "Service Excellence", personal contact with the client is maintained through the duration of the project, subsequently ensuring that a quality product is delivered.

Selected Projects

Projects include construction of raft foundations and in situ floor slabs, for the residential market, in up market security villages such as Pecanwood, Westlake, Birdwood Estate, Centurion Estate, Southdowns, Midstream, Eagle Canyon, Dainfern, Woodhill, Silver Lakes, Willow Acres, Mooikloof, Cornwall Hill, Irene Farm Villages, Eco Park and Cashan as well as numerous commercial developments. The Company has also been involved in construction of raft foundations for low cost housing projects in Gauteng and surrounding areas.



"We shape our buildings, thereafter they shape us" - Winston Churchill