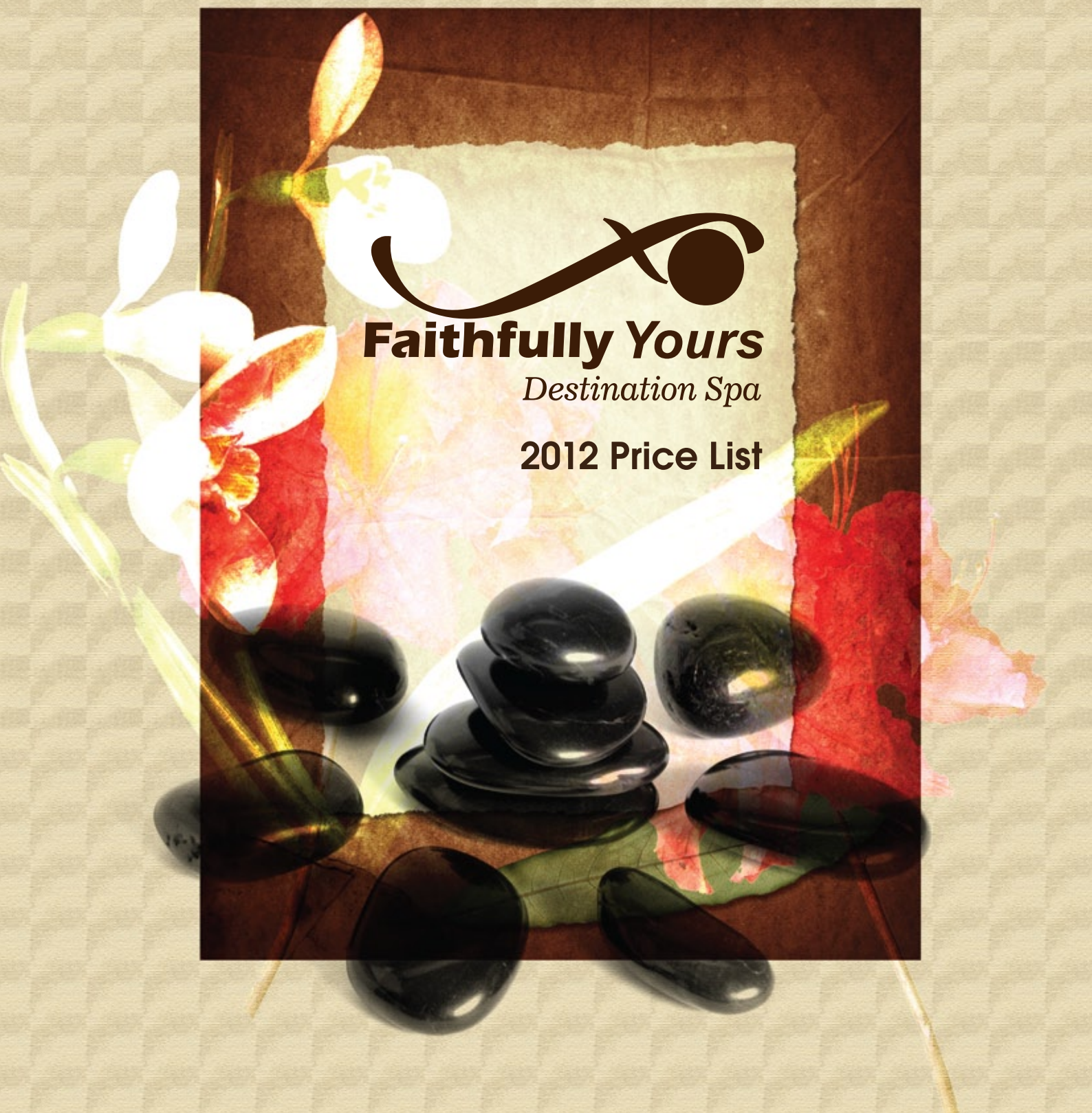




Faithfully Yours

Destination Spa

2012 Price List



Products

- Earth Wise: face and body products
- Earth Sentials: face and body products
- Lillian Terry: face and body products
- Essie: nail enamel
- Future Health Supplements
- Nimue

Packages

Budget Planner

- Express manicure
- Express pedicure
- Mini facial

Duration: +/- 2 hours

Price: R365

Healing Journey

- Pilo foot treatment
- Aroma full body massage
- Pressure points on face: healing mud is used on two chakra areas and we also do a castor oil massage (which can aid liver function)

Duration: +/- 2 hours

Price: R590

Indecisive Package

Your day starts with a light health breakfast followed by a consultation with your therapist. Combine the following choices to suit your needs for the day:

- Choose either:
 - Jacuzzi or
 - Steam
- Choose either:
 - Extraordinary full body exfoliation and full body moisturisation or
 - Exclusive body brush and full body wrap
- Choose either:
 - Harmonious hand or
 - Foot treatment
- And an Earth Sentials facial

Duration: +/- 4 hours

Price: R740

Mother-to-be: Breathing Space

Your day starts with a light health breakfast, followed by a consultation with your therapist.

You will then receive the following (in no specific order):

- Refreshing pedicure
- Cooling leg treatment (either as a pampering treat or to relieve pain and reduce swelling in ankles)
- "Turn-back-time" back, neck and shoulder massage
- Beautifying manicure

With this package, you will also be served a light lunch. Please note: we use Mama Mia products, which are paraben free and safe for baby.

Duration: +/- 3 hours

Price: R750

Freedom Awakening

Your day starts with a light breakfast, followed by a consultation with your therapist. Thereafter, you will receive the following (in no specific order):

- Revitalising full body scrub
- Nourishing and calming full body massage
- Personalised bath therapy
- Tribal cacao wrap
- Earth Sentials facial
- Filling lunch

Duration: +/- 5hours

Price: R1290

Signature Earth Sentials Journey

- Body exfoliation
- Tribal cacao wrap
- Capsule treatment
- Hot stone full body massage
- Earth Sentials facial
- Hand and foot massage

With this package, you will also be served a fruit platter.

Duration: +/- 3 and 1/2 hours

Price: R1510

City Escape

Your day starts with a light health breakfast, followed by a consultation with your therapist. Thereafter, you will receive the following (in no specific order):

- Jet bath
- Paraffin manicure
- Paraffin pedicure
- Earth Sentials facial
- Hot stone full body massage

With this package, you will also be served a light lunch.

Duration: +/- 6 hours

Price: R1460



Readdressing the Balance

Your day starts with a light health breakfast followed by a consultation with your therapist. Combine the following choices to suit your needs for the day:

- Choose either:
 - Jacuzzi or Steam
- And:
 - Facial
 - Head massage
 - Full body massage
 - Exfoliation
 - Balancing reflexology

With this package, you will also be served a light lunch.

Duration: +/- 5 hours

Price: R1180

Facial Maintenance Package

- 6 facials (over the period of 6 months)

You will also receive 2 skin scan sessions FREE, worth R580.

Duration: 6 months

Price: R2190

Bride-to-be Package

Your day starts with a light health breakfast, followed by a consultation with your therapist. You will then receive the following (in no specific order):

- French manicure
- French pedicure
- Eyelash and brow tint
- Eyebrow shape
- Back and neck massage

Duration: +/- 4 hours

Price: R730

Bridal Party Package

- Jacuzzi
- Express manicures
- Express pedicures

Price: R230 per person

Maximum of 6 people

Package for Him

- Back and neck massage (30min)
- Reflexology
- Jacuzzi
- Breakfast

Duration: +/- 2 and 1/2 hours

Price: R470

Couples Therapy Treatment

- Platter
- Jacuzzi, champagne
- Massage (30min back and neck massage for both)

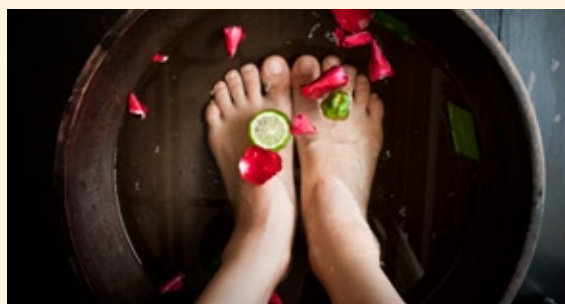
Duration: +/- 1 and 1/2 hours

Price: R580

Build-a-package

Alternatively, you can build your own package according to your needs.

Please Note: Overnight facilities are available on the premises at the SDG hotel.



Pamper Party and Teen Options

Please Note: All Pamper Party and Teen Options are for ages 7-14 only

Express Yourself

- Express manicure
- Express pedicure

Duration: 1 hour

Price: R130

Budget Planner

- Express manicure
- Express pedicure
- Mini facial

Duration: 2 hours

Price: R325

Teen Queen

- Express manicure
- Express pedicure
- Mini facial
- 20 minute back and neck massage
- Jacuzzi

Duration: 3 hours

Price: R480



Colour Me Beautiful

- Express manicure
- Express pedicure
- Make-up

Duration: 1 and 1/2 hours

Price: R280

Pamper Her

- Mini facial
- Eyelash and eyebrow tint
- Eyebrow shaping

Duration: 1 hour

Price: R305

Pamper Him

- Mini facial
- 20 minute back and neck massage
- Hot and cold pool

Duration: 2 hours

Price: R315

Single Treatments

| | |
|-------------------------------|------|
| Express manicure | R50 |
| Express pedicure | R90 |
| Jacuzzi | R50 |
| Mini facial | R195 |
| 20 Minute back & neck massage | R100 |
| Make-up only (no trail) | R150 |
| Eyelash & eyebrow tint | R80 |
| Eyebrow shaping | R60 |

Water facilities can be added to a package at an additional cost. Please contact us in advance for this option.

Please note that all pamper party and teen packages are for ages of up to 16 years only. Group parties are welcome to celebrate birthdays at the spa.

We have a restaurant available on the premises for breakfasts, light lunches and beverages at an additional cost.



Active Rejuvenation treatment R360

For environmentally damaged, pigmentation

and acne skin types. Applied to the skin for a radiant, smoother texture and lightening of

Rejuvenation booster treatment R400

A super antioxidant treatment to help improve skin elasticity, tone and texture. Designed to treat sun- and environmentally-damaged; and hyperpigmented skin types.

Therapeutic treatment R290

A pampering treatment customised to specific skin needs with all the essentials including cleanse, exfoliate, gentle steam, massage and masque.

Nimue deep cleanse treatment R250

A pampering treatment customised to specific skin needs with all the essentials including cleanse, exfoliate, gentle steam, massage and masque.

Nimue eye treatment R260

A treatment is designed for the eye area, to maintain a youthful appearance and intense deep hydration.

Advanced Rejuvenation

Nimue 35% Glycolic treatment R360

The glycolic peel treatment provides controlled and predictable removal of skin cells, to improve the texture and appearance of the skin.

Nimue 7.5% TCA treatment R425

Bio Active Complex and 7.5% TCA are applied to the skin for deeper exfoliation resulting in a radiant, smoother texture and lightening of the pigmentation.

Skin scanner: 1st session R310
thereafter R220

Additional add-ons for selected treatments are available at an extra cost. Please enquire with your therapist.

Essential Enhancers

Eyelash tint R50
Eyebrow tint R45

| | |
|-----------------------|-----|
| Eyelash tint | R50 |
| Eyebrow tint | R45 |
| Eyelash and brow tint | R80 |
| Eyebrow shaping | R60 |

Make-up

| | |
|---|------|
| Day/ Evening/ Matric Farewell (45min) | R200 |
| Trial (40min) | R160 |
| Total | R360 |
| Bridal Make-up (60min) | R240 |
| Trial (40min) | R200 |
| Total | R440 |
| Permanent make-up (60min) | R950 |
| Touch-up for permanent make-up (45 min) | R750 |
| Call-out fee | R300 |



Waxing

| | |
|-------------------------------|------|
| Half leg | R105 |
| Half leg and bikini | R190 |
| Bikini | R105 |
| Underarm | R85 |
| Bikini and underarm | R170 |
| Half leg, bikini and underarm | R275 |
| Three quarter leg | R125 |
| Full leg | R145 |
| Full leg, bikini and underarm | R315 |
| Full leg and bikini | R230 |
| Arm wax | R105 |
| Chest (hot wax) | R135 |
| Chest (strip wax) | R105 |
| Back (hot wax) | R180 |
| Back (strip wax) | R155 |
| Lip | R55 |
| Chin | R65 |
| Eyebrow | R60 |
| Brazilian (all hair removed) | R205 |
| Hollywood (landing strip) | R175 |

IPL: SpectraQuattro™ Intense Pulsed Light

SpectraQuattro™ is a versatile and dynamic IPL platform, performing aesthetic light therapy services with sub-zero intensified pulsed light. This system offers numerous sought-after aesthetic applications for today's dermatological concerns:

- Hair reduction R10*
- Acne R20*

*Price Per Pulse

Hands and Feet

| | |
|---|------|
| Manicure | R155 |
| Paraffin manicure (60min) | R220 |
| French manicure (60min) | R180 |
| Express manicure: | |
| cuticle work, filing, painting (30min) | R90 |
| Gel fill (45min) | R170 |
| Soak (30-60min) | R90 |
| Set of tips with french gel overlay (180min) | R310 |
| French gel overlay (60min) | R170 |
| Colour or clear gel overlay on hands/feet | R160 |
| Fix per nail | R25 |
| Pedicure (60min) | R215 |
| Paraffin pedicure (90min) | R260 |
| French pedicure (60min) | R230 |
| Express pedicure: soaking, cuticle work, filing, painting (30min) | R110 |
| Pilo therapy (a combination of reflexology and healing mud) | R220 |
| Pedicure with gel overlay | R230 |
| Manicure with gel overlay | R180 |
| Reflexology | R190 |
| Callous peel | R190 |

Tanning

| | |
|--|------|
| Sunbed session x 1 (max. 10 min) | R30 |
| Sunbed sessions x 10 | R250 |
| Tanning lotion sachet | R20 |
| Aftercare sachet | R20 |
| Tanning lotion / Aftercare bottled 250ml | R157 |
| SunFX Spray Tan | R220 |
| SunFX Spray Tan with exfoliation | R270 |

Massage

| | |
|--|------|
| Full body | R330 |
| Back & neck (30min) | R210 |
| Back & neck (45min) | R240 |
| Aromatherapy full body (60min) | R360 |
| Aroma back & neck (30min) | R230 |
| Aroma back & neck (45min) | R260 |
| Stress massage (30min) | R200 |
| Indian head massage with/ without oil (30min) | R220 |
| Hot stone full body (60min) | R380 |
| Hot stone back & neck (30min) | R230 |
| Bamboo back & neck (30min) | R230 |
| Bamboo full body (60min) | R380 |
| Thai foot massage (60min) | R320 |

Pregnancy

| | |
|---|------|
| Free your mind back, neck and shoulder massage (30min) | R220 |
| Lighten up your maternity full body massage (60min) | R340 |

Water Facilities

Capsule Body Shots

A variety of single treatments and packages are available, which can relieve/aid the following:

- Stress
- Insomnia
- Arthritis
- Body aches and pains
- Circulation problems
- Detoxification
- Slimming
- Cellulite reduction

Price per session: R220

10 Sessions: R1800

Water Treatments

| | |
|----------------------------|------|
| Jacuzzi (p.p.) (30min) | R50 |
| Hot & cold pool (p.p.) | R50 |
| Steam/Sauna (p.p.) (30min) | R50 |
| Bath therapy (p.p.) | R140 |

Please note: We do not provide swimming costumes for any of the water treatments, please provide your own. The water facilities are *free* when booking any treatment(s) to the value of R500 or more.

Slimming

ENDERMOLOGIE® CELLU M6

Endermologie® results in:

- improved skin tone
- improved skin texture
- reduction in the appearance of cellulite
- recontouring of "difficult" areas e.g.: inner thighs
- reduction in centimetres

| | |
|--|-------|
| Single Endermologie® treatment | R250 |
| LPG Bodywear (Bodystocking) | R260 |
| 14 Treatments (incl. bodywear) | R3300 |
| 20 Treatments (incl. Bodywear) | R4800 |
| Maintenance after goal weight has been reached (once a month) | R250 |

We would prefer that clients over the age of 40 or with larger body types purchase the minimum of 20 sessions in order to achieve effective results.

Lipo Massage

| | |
|---|-------|
| Lipo massage (excl. bodystocking) 5-30min | R125 |
| Bodystocking | R260 |
| 14 Treatment lipo massage (incl. Bodywear) | R1600 |

Please note: lipo massage targets specific areas only, duration of one session is a minimum of 5 to maximum 30 minutes. Any lipo massage longer than 30min will incur an additional cost of R250.

Events/ Group Functions

OPTION 1

- Hot Pool
- Cold pool
- Jacuzzi
- Steam/Sauna

R150 per person (whether the water facilities are used or not). The spa is reserved for you for the day from 09:00 till 17:00. *Minimum of 10 people.*

OPTION 2

- Hot pool
- Cold pool
- Jacuzzi

- Steam/Sauna
- Express manicure OR express pedicure (an additional R20 for french paint)

R250 per person (whether the water facilities are used or not). The spa is reserved for you for the day from 09:00 till 17:00. Platters are available on request. *Minimum of 10 people.*



Specials for the Year

February - Valentines special

Enjoy a fruit platter and champagne whilst unwinding in the jacuzzi with your loved one and end off with a heavenly back and neck massage in a joined room.

R620 per couple, upgrade to an overnight stay for R440 per person

March - Balancing treatment

- Earth Sentials facial
- Pilo therapy

R550

April - Easter special (water treatment)

Spa Oceana Capsule treatment with an express EarthSentials facial that will leave you relaxed, uplifted and de-stressed.

R300

May - Mothers day diamond deluxe special

Isn't your mom a gem? Can't afford a real diamond? Why not get her the diamond deluxe package, which consists of a relaxing pedicure, express manicure with a facial and scalp massage.

R630

June - Fathers day de-stress special

For the super stressed out dad, who needs time out. Spoil your dad with an African bamboo back and neck massage, a relaxing jacuzzi session and reflexology.

R410

July - Warming winter special

Warm-up with our indulgent pedicure and soothing paraffin dip on your hands and end off this luxury experience with a lava stone muscle relaxing back and neck massage.

R450

August - Endo special

20 Endermologie sessions (incl. bodystocking).

R4300

September - Spring Special

- Jacuzzi,
- Manicure
- Pedicure

R390

October - Turkish delight body treatment

Try something new, sensational and slightly outrageous! Start with a relaxing Jacuzzi treatment and then slip away to a room where you will receive a full body polish, Turkish delight body pampering massage and a Turkish delight treat to complete the senses.

R490

November - Faithfully Yours Birthday Special

- Express facial
- Express manicure
- Express pedicure

R360

December - Festive Special

Dear Santa, can you please leave me hairless this Christmas - 20% less on all waxes.





Faithfully Yours

Destination Spa

Telephone: 010 222 0519

Christeline (Therapist): 083 627 8769

Tanya (Therapist): 083 986 4107

Mari (Therapist): 072 186 4154

Address: 330 A Boundary Rd
Northriding

Email: info@faithfullyyours.co.za

Website: www.faithfullyyours.co.za

We are open from Monday to Saturday. Closed on Sundays.

